

**SPORT-TEK**

# Sport-Tek<sup>®</sup> Ladies Sport-Wick<sup>®</sup> Textured 1/4-Zip Pullover. LST860



This mid-weight pullover has an unbeatable textured look with contrast zipper taping. Plus, it performs by wicking moisture.

- 100% polyester
- Cadet collar
- Tag-free label
- Taped neck
- Dyed-to-match Vislon zipper and pull
- Silver zipper tape
- Angled chin guard for additional comfort
- Set-in sleeves
- Thumbholes to keep hands warm
- Front and back princess seams
- Open cuffs and slight drop tail hem

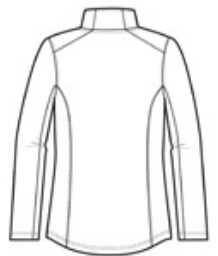
Due to the nature of 100% polyester performance fabrics, special care must be taken throughout the printing process.

### CARE INSTRUCTIONS

Machine wash cold with like colors. Only non-chlorine bleach when needed. Tumble dry low. Do not use softener. Remove promptly. Cool iron if necessary. Do not dry clean.



front



back

### HOW TO MEASURE



#### BUST

Measure under the arm and around the fullest part of the bust with arms down, keeping tape horizontal.

### SIZE CHART

	XS	S	M	L	XL	XXL	3XL	4XL
Size	2	4/6	8/10	12/14	16/18	20/22	24/26	28/30
Bust	32-34	35-36	37-38	39-41	42-44	45-47	48-51	52-55

### COLOR INFORMATION



Black  
PMS NTR BLACK



Deep Red  
PMS 201C



Iron Grey  
PMS 7540C



Pink Raspberry  
PMS 7425C



True Navy  
PMS 533C



True Royal  
PMS 7686C



White



# Sport-Tek® Ladies Sport-Wick® Textured 1/4-Zip Pullover. LST860

## PRODUCT MEASUREMENTS

	XS	S	M	L	XL	XXL	3XL	4XL
Size	2	4/6	8/10	12/14	16/18	20/22	24/26	28/30
Bust	18 1/2	19 1/2	20 1/2	22	23 1/2	25	27	29
Body Length at Back	26 1/2	27	27 1/2	28	28 1/2	29	29 1/2	30
Sleeve Length	32 1/2	33	33 1/2	34 1/8	34 3/4	35 3/8	35 3/4	36 1/8

### BUST

Measured one inch below armhole.

### BODY LENGTH AT BACK

Measured from high point shoulder to finished hem at back.

### SLEEVE LENGTH

Start at center of neck and measure down shoulder, down sleeve to hem.