

**SPORT-TEK®**

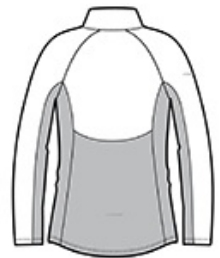
## Sport-Tek® Ladies Sport-Wick® Stretch Contrast 1/4-Zip Pullover. LST854

By mixing heather with a solid color and adding reflective hits, this moisture-wicking pullover has a technical look plus plenty of stretch for easy movement.

- 6.8-ounce, 90/10 poly/spandex jersey
- Soft-brushed backing
- Tag-free label
- Reflective details on right sleeve and lower back
- Feminine curved and blocked design details on back
- Cadet collar
- Reverse coil zipper
- Princess seams
- Raglan sleeves
- Open cuffs and hem
- Thumbholes to keep hands warm
- Drop tail hem

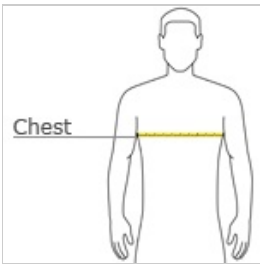


front



back

### HOW TO MEASURE



#### CHEST WIDTH

Measure under the arm and around the fullest part of the chest with arms down, keeping tape horizontal.

### SIZE CHART

	XS	S	M	L	XL	XXL	3XL	4XL
Size	2	4/6	8/10	12/14	16/18	20/22	24/26	28
Bust	32-34	35-36	37-38	39-41	42-44	45-47	48-51	52-55

### COLOR INFORMATION



Black/ Charcoal  
Grey Heather  
PMS 426 C



True Navy/ True  
Navy Heather  
PMS 533 C



White/ Charcoal  
Grey Heather



# Sport-Tek® Ladies Sport-Wick® Stretch Contrast 1/4-Zip Pullover. LST854

## PRODUCT MEASUREMENTS

	XS	S	M	L	XL	XXL	3XL	4XL
Size	2	4/6	8/10	12/14	16/18	20/22	24/26	28/30
Bust	17 1/4	18 1/4	19 1/4	20 3/4	22 1/4	23 3/4	25 3/4	27 3/4
Body Length at Back	28 1/4	28 3/4	29 1/4	29 3/4	30 1/4	30 3/4	31 1/4	31 3/4
Sleeve Length	32 1/2	33	33 1/2	34 1/8	34 3/4	35 3/8	35 3/4	36 1/8

### BUST

Measured across the chest one inch below armhole when laid flat.

### BODY LENGTH AT BACK

Measured from high point shoulder to finished hem at back.

### SLEEVE LENGTH

Start at center of neck and measure down shoulder, down sleeve to hem.