

SPORT-TEK

Sport-Tek® Ladies Tech Fleece Colorblock Full-Zip Hooded Jacket. LST245



Snag-resistant and pill-resistant with a matte finish and contrast color detailing throughout, this double-knit jacket is right on trend with moisture-wicking performance.

- 7.1-ounce, 100% polyester
- Three-panel hood with drawcord and toggles
- Contrast neck and hood taping
- Contrast reverse coil zippered media pocket with headphone exit port
- Headphone holding loops at neck
- Reverse coil zipper
- Princess seams with integrated front pockets
- Elongated rib knit cuffs and hem
- Thumbholes to keep hands warm

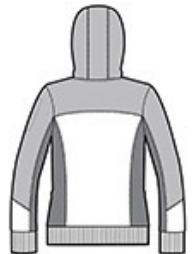
Due to the nature of 100% polyester performance fabrics, special care must be taken throughout the printing process.

CARE INSTRUCTIONS

Machine wash cold with like colors. Do not use softener. Remove promptly. Do not bleach. Tumble dry low. Cool iron if necessary.



front



back

HOW TO MEASURE



BUST

Measure under the arm and around the fullest part of the bust with arms down, keeping tape horizontal.

SIZE CHART

	XS	S	M	L	XL	XXL	3XL	4XL
Size	2	4/6	8/10	12/14	16/18	20/22	24/26	28/30
Bust	32-34	35-36	37-38	39-41	42-44	45-47	48-51	52-55

COLOR INFORMATION



Black/ Graphite
Heather/ Black
PMS NTR BLACK
C



Black/ Graphite
Heather/ True Red
PMS 200C



Black/ Graphite
Heather/ True
Royal
PMS 7686C



Black/ Graphite
Heather/ White
PMS NTR BLACK
C



Sport-Tek® Ladies Tech Fleece Colorblock Full-Zip Hooded Jacket. LST245

PRODUCT MEASUREMENTS

	XS	S	M	L	XL	XXL	3XL	4XL
Size	2	4/6	8/10	12/14	16/18	20/22	24/26	28/30
Bust	18 1/2	19 1/2	20 1/2	22	23 1/2	25	27	29
Body Length at Back	26	26 1/2	27	27 1/2	28	28 1/2	29	29 1/2
Sleeve Length from Center Back	33	33 1/2	34	34 5/8	35 1/4	35 7/8	36 1/4	36 5/8

BUST

Measured across the chest one inch below armhole when laid flat.

BODY LENGTH AT BACK

Measured from high point shoulder to finished hem at back.

SLEEVE LENGTH FROM CENTER BACK

Measure from Center Back neck to shoulder point to sleeve hem.