



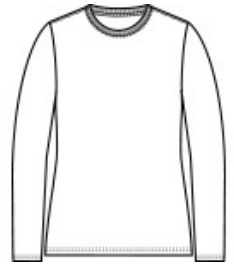
An indispensable t-shirt in our classic silhouette--with a very friendly price.

- 5.4-ounce, 100% cotton
- 90/10 cotton/poly (Athletic Heather)
- 50/50 cotton/poly (Dark Heather Grey, Heather Navy, Neon Pink)
- Side seamed with a contoured body for a feminine fit
- Open hem cuffs
- Removable tag for comfort and relabeling

CARE INSTRUCTIONS

Machine wash cold, inside out with like colors, only non-chlorine bleach when needed. Tumble dry medium.

Medium/hot iron, do not iron decoration.



front



back

HOW TO MEASURE



BUST

Measure under the arm and around the fullest part of the bust with arms down, keeping tape horizontal.

SIZE CHART

	XS	S	M	L	XL	XXL	3XL	4XL
Bust	32-34	35-36	37-38	39-41	42-44	45-47	48-51	52-55
Size	2	4/6	8/10	12/14	16/18	20/22	24/26	28/30

COLOR INFORMATION

 Aquatic Blue PMS 2389C	 Athletic Heather PMS COOL GRAY 7C	 Athletic Maroon PMS 209C	 Candy Pink PMS 189C	 Charcoal PMS COOL GRAY 11C	 Dark Heather Grey PMS 7540C	 Jet Black PMS NTR BLACK C	 Kelly PMS 340C	 Light Blue PMS 278C	 Navy PMS 2380C	 Purple PMS 7672C
 Red PMS 200C	 Royal PMS 2133C	 Sangria PMS 2046C	 White							



Port & Company[®] Ladies Long Sleeve Core Cotton Tee. LPC54LS

PRODUCT MEASUREMENTS

	XS	S	M	L	XL	XXL	3XL	4XL
Bust	18 1/2	19 1/2	20 1/2	22	23 1/2	25	27	29
Body Length	26	26 1/2	27	28	29	30	30 1/2	31
Sleeve From Shoulder	32	32 1/2	33	33 1/2	34	34 1/2	35	35

BUST

Measured one inch below armhole.

BODY LENGTH

Measured from high point of shoulder from the front.

SLEEVE FROM SHOULDER

Measured from high point of shoulder to finished hem at sleeve.