



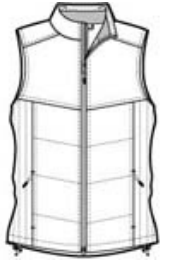
Keep the warmth centered on your core in our Puffy Vest. These styles are great for layering over a long sleeve shirt or under a jacket. Some feature a colorful lining.

- 100% polyester shell, 100% polyester lining with water-resistant finish, 6-ounce polyfill
- Zip-through cadet collar
- Reverse coil zipper
- Interior storm flap
- Interior zippered pocket
- Interior pocket with drawcord and toggle
- Front zippered pockets
- Port Pocket™ for easy embroidery access
- Open hem with drawcord and toggles for adjustability

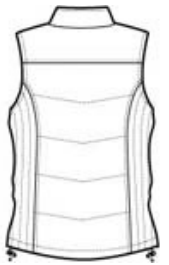
CARE INSTRUCTIONS

Machine wash cold with like colors. Use mild detergent. Do not bleach. Tumble dry low remove promptly. Cool iron if necessary. Do not dry clean.

[Tips For Effectively Screen Printing Polyester Fabrics](#)

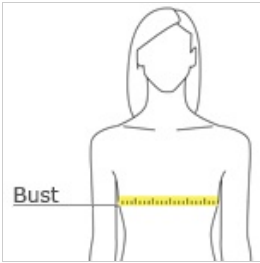


front



back

HOW TO MEASURE



BUST
Measure under the arm and around the fullest part of the bust with arms down, keeping tape horizontal.

SIZE CHART

	S	M	XS	XXL	3XL	4XL	L	XL
Size	4/6	8/10	2	20/22	24/26	28/30	12/14	16/18
Bust	35-36	37-38	32-34	45-47	48-51	52-55	39-41	42-44

COLOR INFORMATION

Black/ Black PMS NTR BLACK C	Bright Berry/ Bermuda Purple PMS 242C	Dark Slate/ Black PMS 432C	Mediterranean Blue/ Black PMS 2118C	White/ Dark Slate

PRODUCT MEASUREMENTS

	XS	S	M	L	XL	XXL	3XL	4XL
Bust	19 3/4	20 3/4	21 3/4	23 1/4	24 3/4	26 1/4	28 1/4	30 1/4
Body Length at Back	24 1/2	25	25 1/2	26 1/2	27 1/2	28 1/2	29	29 1/2

BUST

Measured one inch below armhole.

BODY LENGTH AT BACK

Measured from high point shoulder to finished hem at back.