



Keep your core warm and protected from the elements in this versatile vest that's easy on the budget.

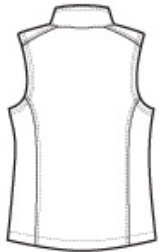
- 100% polyester woven shell bonded to a water-resistant film insert and a 100% polyester microfleece lining
- 92/8 poly/spandex woven shell bonded to a water-resistant film insert and a 100% polyester microfleece lining (Heathers)
- 1000MM fabric waterproof rating
- 1000G/M2 fabric breathability rating
- Reverse coil zippers
- Zip-through cadet collar with chin guard
- Front zippered pockets
- Open hem

**CARE INSTRUCTIONS**

Machine wash cold with like colors, only non-chlorine bleach when needed. Tumble dry medium. Cool iron if necessary.



front



back

**HOW TO MEASURE**



**BUST**

Measure under the arm and around the fullest part of the bust with arms down, keeping tape horizontal.

**SIZE CHART**

	XS	S	M	L	XL	XXL	3XL	4XL
Size	2	4/6	8/10	12/14	16/18	20/22	24/26	28/30
Bust	32-34	35-36	37-38	39-41	42-44	45-47	48-51	52-55

**COLOR INFORMATION**

Battleship Grey PMS 7540 C	Black PMS NTR BLACK C	Black Charcoal Heather	Dress Blue Navy PMS 533C	Marshmallow PMS COOL GRAY 1C

**PRODUCT MEASUREMENTS**

	XS	S	M	L	XL	XXL	3XL	4XL
Size	2	4/6	8/10	12/14	16/18	20/22	24/26	28/30
Bust	17	18	19	20 1/2	22	23 1/2	25 1/2	27 1/2
Body Length	24 1/4	24 3/4	25 1/4	26 1/4	27 1/4	28 1/4	28 3/4	29 1/4

**BUST**

Measured one inch below armhole.

**BODY LENGTH**

Measured from high point of shoulder from the front.