

**Port Authority® Collective Outer Shell Jacket. J900**

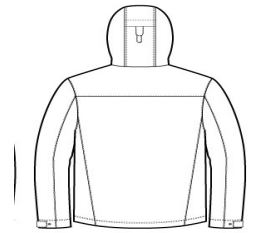


This sophisticated, breathable and waterproof shell is fully seam-sealed to fight the elements with a water-shedding durable water-repellent (DWR) finish.

- Weatherproof outer layer into which other Collective styles can be zipped and secured by snap attachments
- 100% polyester shell with DWR finish
- 100% polyester printed lining
- 8000MM fabric waterproof rating
- 3000G/M2 fabric breathability rating
- Slightly longer length
- Attached, adjustable hood with locking drawcord
- Reverse coil zippers
- Interior chest pocket
- Chest pocket with hook and loop closure
- Full-length interior storm flap
- Full-length exterior storm flap with snap closure
- Adjustable snap cuffs
- Front zippered pockets
- Port Pocket™ for easy embroidery access
- Adjustable locking drawcord at hem



front

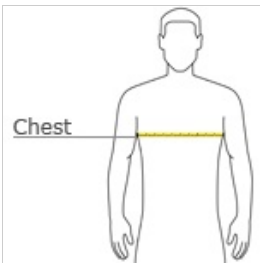


back

**CARE INSTRUCTIONS**

Machine wash cold with like colors; do not use fabric softener; tumble dry low; remove promptly; only non-chlorine bleach when needed; cool iron if necessary; do not dry clean.

**HOW TO MEASURE**



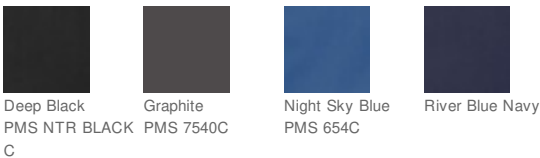
**CHEST WIDTH**

Measure under the arm and around the fullest part of the chest with arms down, keeping tape horizontal.

**SIZE CHART**

	XS	S	M	L	XL	2XL	3XL	4XL
Chest	32-34	35-37	38-40	41-43	44-46	47-49	50-53	54-57

**COLOR INFORMATION**



**PRODUCT MEASUREMENTS**

	XS	S	M	L	XL	2XL	3XL	4XL
Body Length	30	31	32	33	34	35	35 1/2	36
Chest Width	20 1/2	22	23 1/2	25	26 1/2	28	30	32
Sleeve Length	35 3/4	36 1/2	37 1/4	38	38 3/4	39 1/2	40 1/4	41

**BODY LENGTH**

Measured from high point of shoulder from the front.

**CHEST WIDTH**

Measured across the chest one inch below armhole when laid flat.

**SLEEVE LENGTH**

Start at center of neck and measure down shoulder, down sleeve to hem.