



Keep your core warm and protected from the elements in this versatile vest that's easy on the budget.

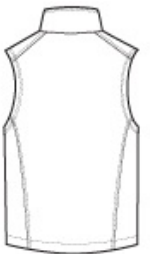
- 100% polyester woven shell bonded to a water-resistant film insert and a 100% polyester microfleece lining
- 92/8 poly/spandex woven shell bonded to a water-resistant film insert and a 100% polyester microfleece lining (Heathers)
- 1000MM fabric waterproof rating
- 1000G/M2 fabric breathability rating
- Reverse coil zippers
- Zip-through cadet collar with chin guard
- Front zippered pockets
- Open hem

CARE INSTRUCTIONS

Machine wash cold with like colors, only non-chlorine bleach when needed. Tumble dry medium. Cool iron if necessary.



front



back

HOW TO MEASURE







CHEST WIDTH

Measure under the arm and around the fullest part of the chest with arms down, keeping tape horizontal.

SIZE CHART

	XS	S	M	L	XL	2XL	3XL	4XL
Chest	32-34	35-37	38-40	41-43	44-46	47-49	50-53	54-57

COLOR INFORMATION

			
Battleship Grey PMS 7540 C	Black PMS NTR BLACK C	Black Charcoal Heather	Dress Blue Navy PMS 533C

PRODUCT MEASUREMENTS

	XS	S	M	L	XL	2XL	3XL	4XL
Chest Width	19	20 1/2	22	23 1/2	25	26 1/2	28 1/2	30 1/2
Body Length	26	27	28	29	30	31	31 1/2	32

CHEST WIDTH

Measured across the chest one inch below armhole when laid flat.

BODY LENGTH

Measured from high point of shoulder from the front.