

Eddie Bauer

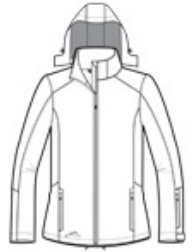
**Eddie Bauer® Ladies Hooded Soft Shell Parka.
EB537**



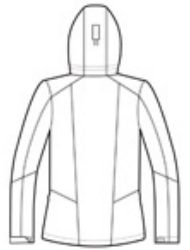
This longer-length parka offers very good water protection and breathability thanks to a 3K/3K fabric. A detachable hood and articulated sleeves make this parka a cold-weather must-have. 3000MM fabric water protection rating, 3000G/M² fabric breathability rating, interior storm flap, chin guard, reverse coil zippers, front zippered pockets, adjustable tab cuffs with hook and loop closures and an open hem with locking drawcords. Princess seams, reverse coil zippered left sleeve pocket, contrast Eddie Bauer logo on right hem. Made of a 96/4 poly/spandex shell bonded to a water-resistant laminated film and a 100% polyester microfleece interior.

CARE INSTRUCTIONS

Machine wash cold. Only non-chlorine bleach when needed. Tumble dry low. Cool iron if necessary. Do not dry clean.



front



back

HOW TO MEASURE



BUST

Measure under the arm and around the fullest part of the bust with arms down, keeping tape horizontal.

SIZE CHART

	XS	S	M	L	XL	2XL	3XL	4XL
Size	2	4/6	8/10	12/14	16/18	20/22	24/26	28/30
Bust	32-33	34-35	36-37	38-40	41-43	44-46	47-49	50-52

COLOR INFORMATION



Admiral Blue
PMS 534C



Black
PMS NTR BLACK
C



Grey Steel
PMS 7540C



Eddie Bauer® Ladies Hooded Soft Shell Parka. EB537

PRODUCT MEASUREMENTS

	XS	S	M	L	XL	2XL	3XL	4XL
Size	2	4/6	8/10	12/14	16/18	20/22	24/26	28/30
Bust	18 1/4	19 1/4	20 1/4	21 3/4	23 1/4	24 3/4	26 3/4	28 3/4
Body Length at Back	27 3/4	28 3/8	29	29 5/8	30 1/4	30 7/8	31 1/2	32 1/8
Sleeve Length	32	32 1/2	33	33 5/8	34 1/4	34 7/8	35 1/4	35 5/8

BUST

Measured one inch below armhole.

BODY LENGTH AT BACK

Measured from high point shoulder to finished hem at back.

SLEEVE LENGTH

Start at center of neck and measure down shoulder, down sleeve to hem.