

Eddie Bauer

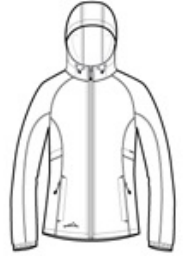
Ladies Packable Wind Jacket. EB501



Wind was the inspiration for this compact layer. Plus, it packs down into its own logoed pocket, making it easy to carry wherever you go. Hood with locking drawcords for adjustability, contrast reverse coil zipper, underarm vents, front zippered pockets with packable right pocket, elastic cuffs and an open hem. Contrast Eddie Bauer logo on right hem. Made of 100% nylon.

CARE INSTRUCTIONS

Secure all garment before laundering Machine wash warm delicate separately Use mild detergent rinse throughly Do not bleach Tumble dry low or for best result line dry Do not iron. Do not dry clean

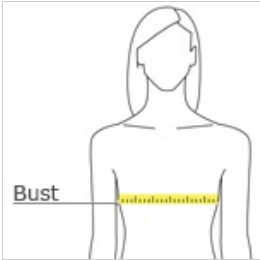


front



back

HOW TO MEASURE



BUST

Measure under the arm and around the fullest part of the bust with arms down, keeping tape horizontal.

SIZE CHART

	XS	S	M	L	XL	2XL	3XL	4XL
Size	2	4/6	8/10	12/14	16/18	20/22	24/26	28/30
Bust	32-33	34-35	36-37	38-40	41-43	44-46	47-49	50-52

COLOR INFORMATION



Adriatic Blue
PMS 2377C



Black
PMS NTR BLACK
C



Grey Steel
PMS 7540C



Ladies Packable Wind Jacket. EB501

PRODUCT MEASUREMENTS

	XS	S	M	L	XL	2XL	3XL	4XL
Chest Size (inches)	19 1/4	20 1/4	21 1/4	22 3/4	24 1/4	25 3/4	27 3/4	29 3/4
Sleeve Length	32 3/4	33 1/4	33 3/4	34 1/4	34 5/8	34 7/8	35 1/4	35 3/8
Body Length at Back	25	25 1/2	26	26 1/2	27	28	28 1/2	29

SLEEVE LENGTH

Start at center of neck and measure down shoulder, down sleeve to hem.

BODY LENGTH AT BACK

Measured from high point shoulder to finished hem at back.